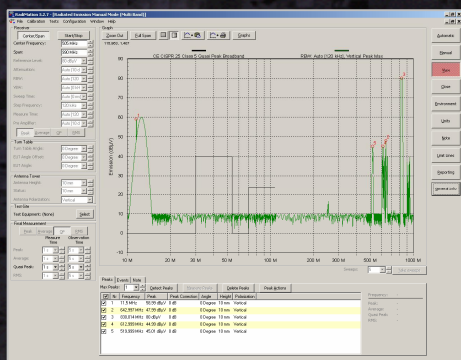


RadiMation®

Integral EMI/EMC Measurement Software

The leader in EMC testing for over 10 years



- Modular
- Multi-band
- Open

- Flexible
- Easy to use
- Traceable Results

The fifth generation of RadiMation® combines Immunity and Emission testing, conducted as well as radiated, in one integrated package for use throughout the test facility. Instead of automating one single EMC test, RadiMation® allows the user to perform complete EUT (Equipment Under Test) testing. RadiMation® has been developed in close co-operation with recognized EMC test laboratories and has been optimized for use in EMC test facilities. The package is open to all brands of test equipment, supports all standards – civil, automotive, military and aerospace - and test results can be easily exported. RadiMation® makes fully automated EMC testing a reality.

Multi-band

The new generation software with multi-band functionality enables the user to set and prioritize different parameters in one test. This way it is possible to change the modulation before the frequency is changed. Thus reducing the time needed for settling the power per frequency point. Apart from this all other parameters can be changed per defined frequency band. So not only aforementioned modulation and frequency but also parameters as polarization, antenna height, turntable position and used equipment can be set for a determined order per frequency band in a single test. This new functionality turns RadiMation® into the most powerful and flexible package in EMC testing.

Speed

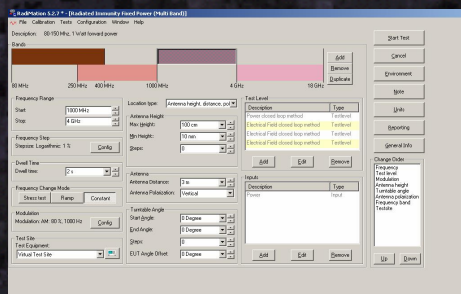
Executing EMC measurements can be a time consuming activity. The RadiMation® package is optimized for speed. Test set-up files speed up the day to day test work and reduce errors.

Easy to Use

All modules in RadiMation® have the same look and feel. Due to this fact an engineer using one module is readily up to speed on another module. For each module all settings and other information are displayed in one screen. This way the engineer has a clear overview of the test that will be performed and the settings the software will use. As RadiMation® is developed in a Windows® environment it will run and is supported under all Windows® operating systems

Report Generation

As most data for a report is available in RadiMation® almost the complete report can be automatically generated. The test engineer is left to write just the remarks and the conclusion. All data, pass / fail statements, graphs, used test equipment and EUT related data is transferred to standard word processors like Microsoft Word®, WP® or AmiPro®. The appearance of reports can be entirely customised since it uses free format templates with keyword identifiers to represent test data.



Dijkstra Advies, Research & EMC Instruments B.V.
Vijzelmolenlaan 7 – NL-3447 GX Woerden
The Netherlands
Tel: +31(0)348 41 65 92
Fax: +31 (0348) 49 97 32
Internet: www.dare.nl
E-mail: instruments@dare.nl

The Standard for Consultancy, (Re)design
and Training in EMC and Product Safety

DARE!!
Instruments

Checking Device Drivers

Drivers are available for over 2.500 instruments. These drivers are included in the package and new drivers are developed free of charge for all commercially available equipment. The RadiMation Software does not just send commands to the measurement instruments but unlike other packages checks whether the instrument processed the command in a proper way thus ensuring fault free measurements.

Modular

A modular approach allows different levels of functionality to be configured. The following modules are available:

- Radiated Immunity
- Conducted Immunity
- Radiated Emission
- Conducted Emission
- Pulsed Immunity (ESD, EFT, Surge)
- Report Generator

Supports all standards

RadiMation® supports all military and civil standards and even enables the user defined custom specific tests. Currently RadiMation® is in use in the following fields:

- Automotive
- Business electronics
- Telecom
- Education
- Medial
- Defence/Military
- Consumer
- Engineering

Open

The software is open in three ways. First and foremost the RadiMation® software can control all equipment. As long as the device has an interface to GP-IB or RS-232 it can be attached to the system. Users may also create device drivers for themselves. Secondly, data can be exported in many ways. In the third place the package is user configurable to a great extent. All functionality can be made available to everyone or limited on a number of levels. All these points provide the customer with freedom of choice.

System Requirements

The RadiMation® software will operate and is tested with Windows XP® and Vista® operating system on any PC with minimum 256 Mb RAM (512 Mb recommended) and a clock speed of over 2 GHz.

Supports the Engineer

EMC test engineers are highly educated and experienced people. From a motivational point of view as well as for cost reasons it is important to free the engineer from annoying tasks like: EUT monitoring, Reporting, Keeping track of measurement data, Waiting time and Test configuration

Designed to comply with ISO17025

For quality control and error checking afterwards, it is mandatory that not only processed results, but also all 'raw' data is stored. In the event of a strange phenomenon, study of all the test results can clarify the reason for the event and even allows recalculation on raw data. RadiMation® provides full traceable results.

Before a test is started several checks are performed to ascertain the full operationally of the test set-up.

More information

For more information contact:

D.A.R.E!! Instrumens at:
+31 (0)348 41 65 92 or instruments@dare.nl
Internet: www.dare.nl

Distributed by:

DARE!!
Instruments

Dijkstra Advies, Research & EMC Instruments B.V.
Vijzelmolenlaan 7 – NL-3447 GX Woerden - The Netherlands
Tel: +31(0)348 41 65 92, Fax: +31 (0)348 49 97 32
Internet: www.dare.nl
E-mail: instruments@dare.nl